



Important Note

Windows BACKUP and UPDATE BIOS – AMI EFI BIOS

Run BIOS update utility	2
Backup existing BIOS	3
BIOS update	4
Restore BIOS default settings	6

MS-DOS BACKUP and UPDATE BIOS – AMI EFI BIOS

Backup existing BIOS	7
BIOS update	7



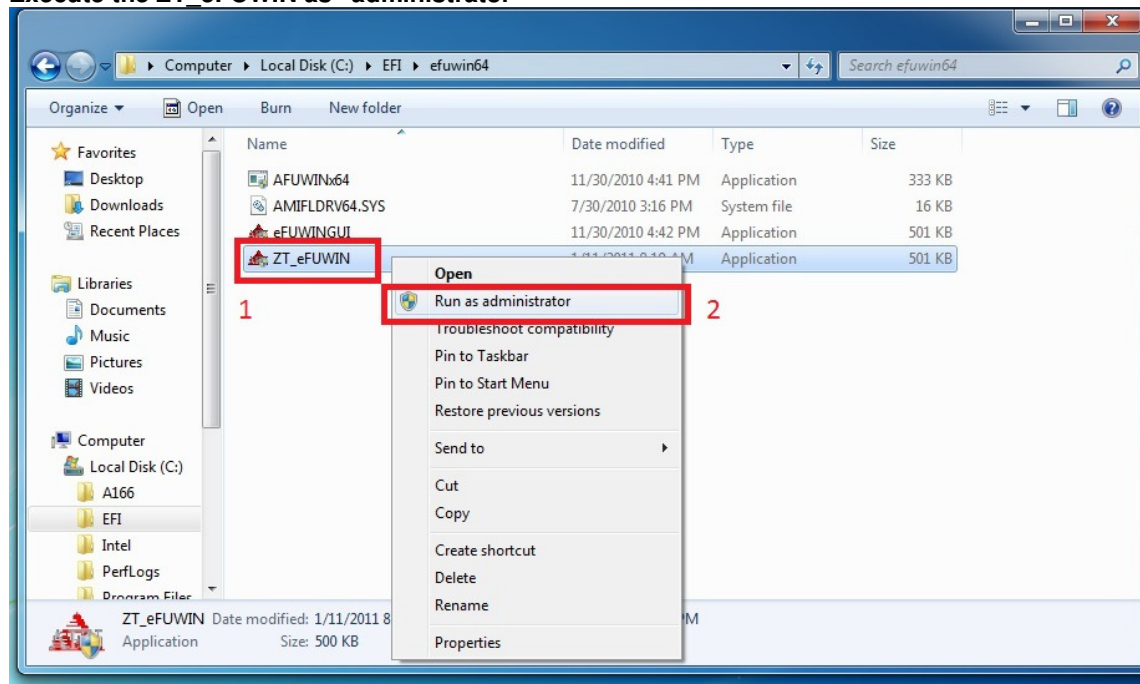
Windows BACKUP and UPDATE BIOS – AMI EFI BIOS

(ver. 1.3)

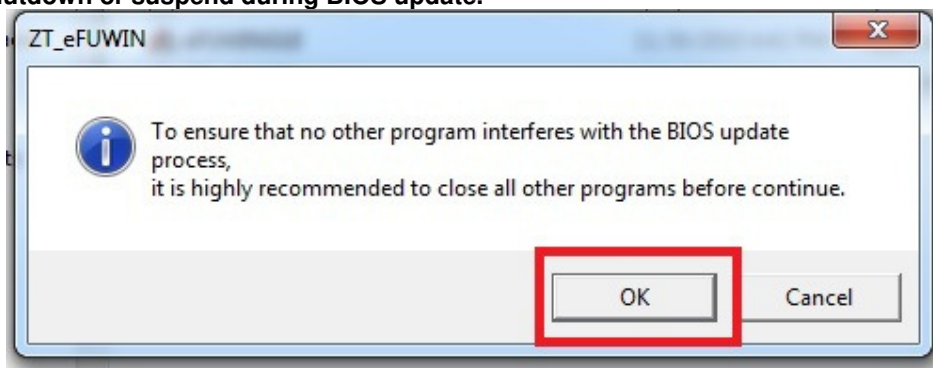
Run BIOS update utility

Uncompress the download zip file in the root location folder (e.g. C:\BIOS\). Read the update information from the note.txt file. The download file may include more than one BIOS. Follow the instruction from the note.txt, then decide the correct BIOS binary file. The BIOS binary file could be .ROM or .BIN extension (xxxxxxx.rom or xxxxxxx.bin). Before update the BIOS, please make sure the system is running at normal system clock. Turn off the Anti-virus, screen saver and other pre-load programs. Any program pop up may interrupt the update process.

Execute the ZT_eFUWIN as “administrator”



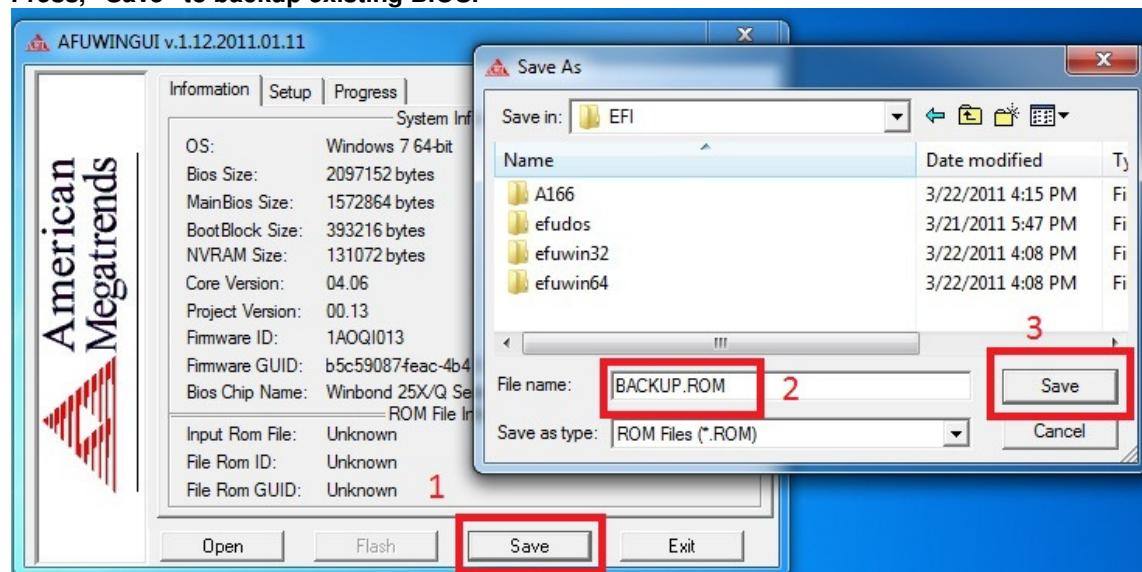
**Warning message appears. Make sure other programs are closed and reply “OK”.
Don’t shutdown or suspend during BIOS update.**



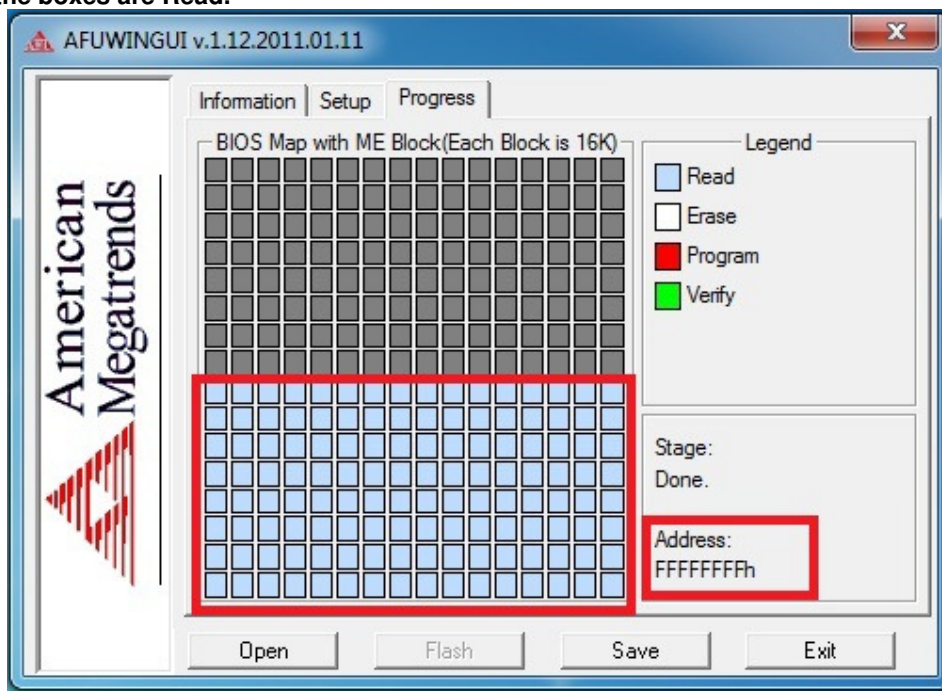


Backup existing BIOS

Select "Save", assign a name (.ROM) for the backup file.
Press, "Save" to backup existing BIOS.



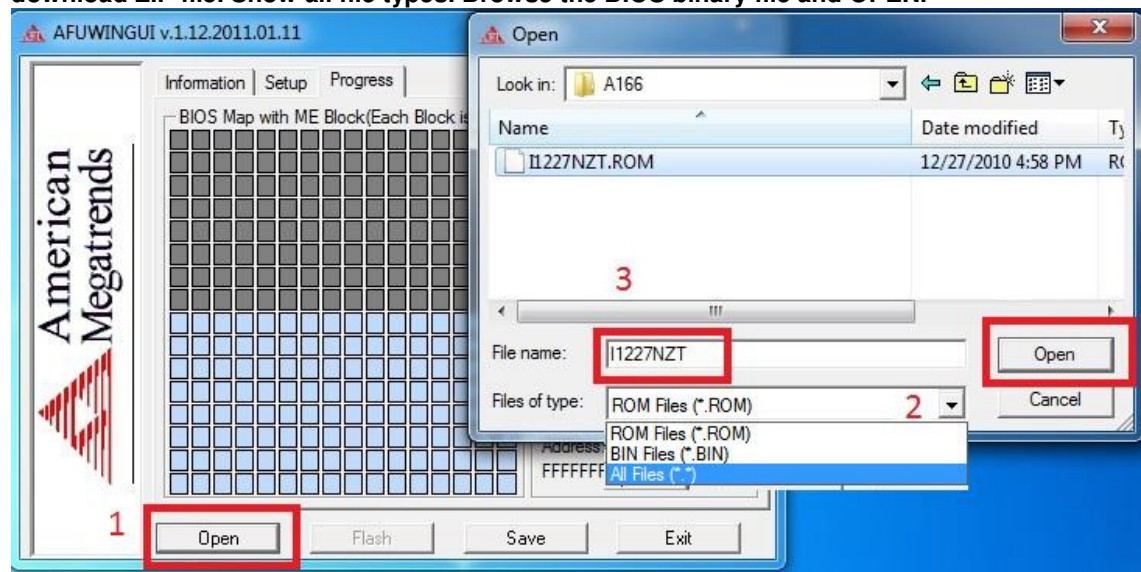
After backup complete, the Address will reach "FFFFFFFFh".
Half of the boxes are Read.



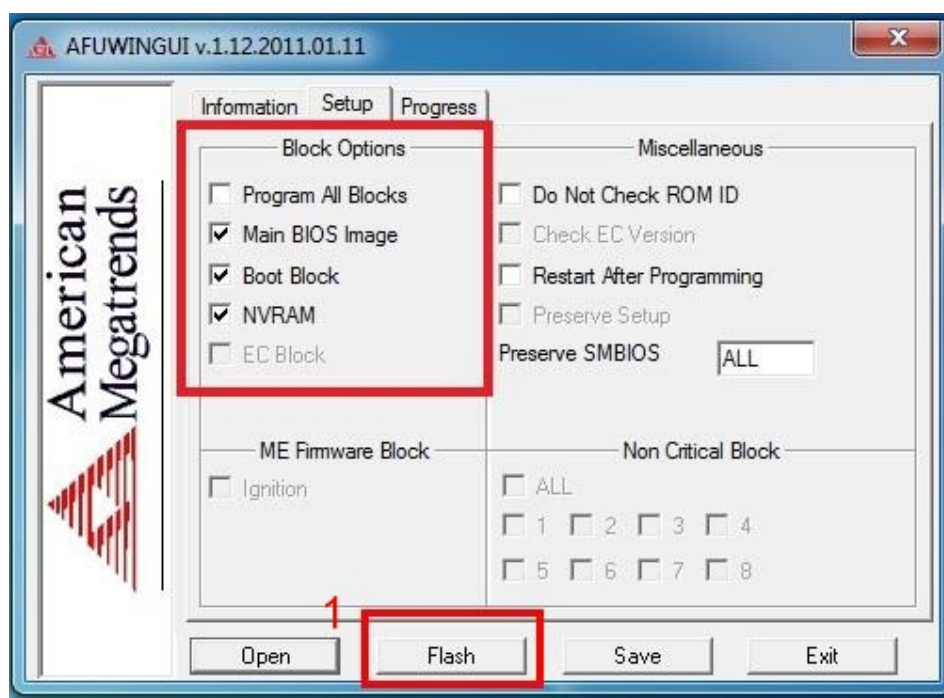


BIOS update

Select "Open" to load the BIOS binary file (.ROM or .BIN), which de-compressed from the download ZIP file. Show all file types. Browse the BIOS binary file and OPEN.



Keep all update options, **DON'T CHANGE**.
Press "Flash" to update BIOS.



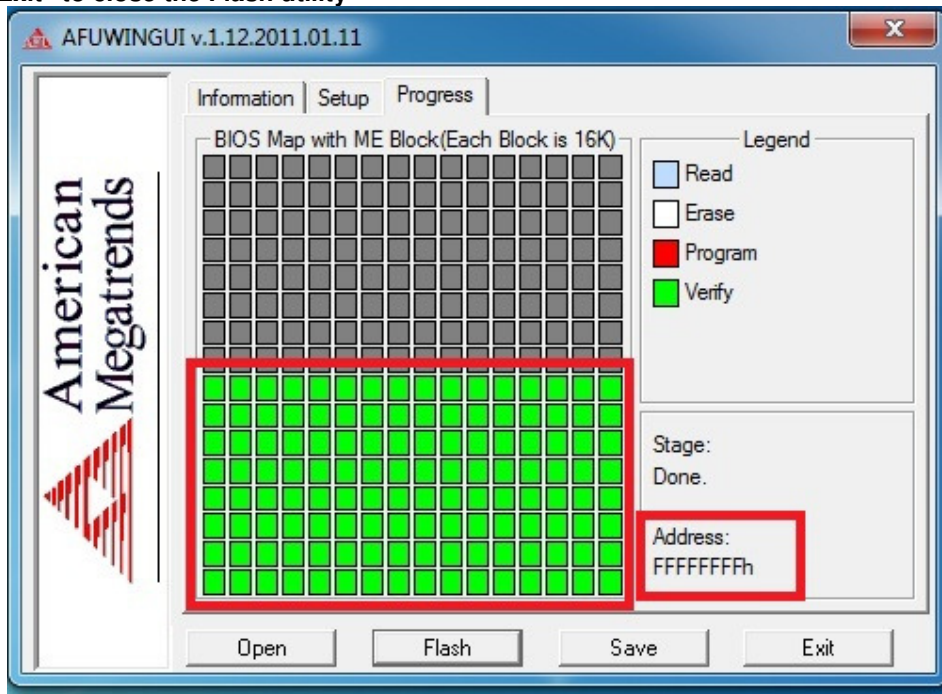


After the update complete, the Address will reach “FFFFFFFFh”.

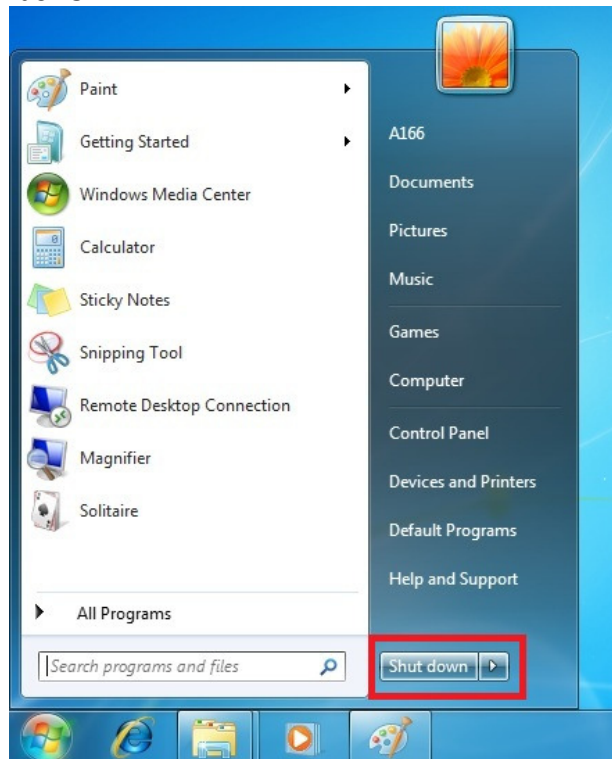
All updated boxes will be “Verify”

Then, make sure the update is success completed.

Press “Exit” to close the Flash utility



Press **SHUTDOWN** Windows.



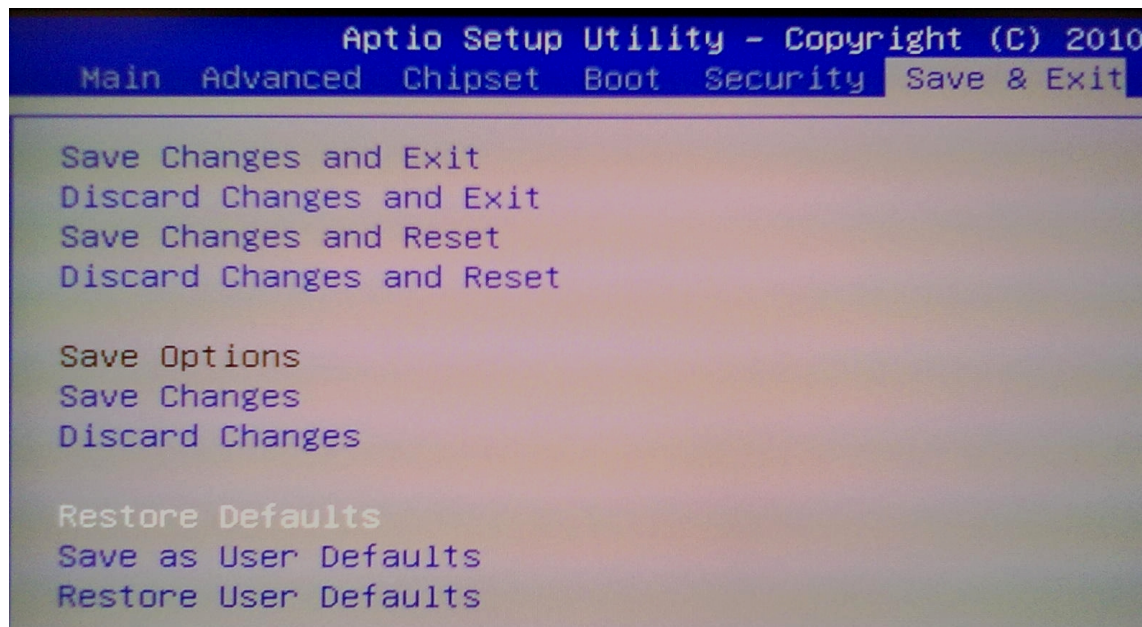


Restore BIOS default settings

Power on the PC.

Press DEL to Run SETUP

In Save & EXIT menu, Restore Defaults.



Save Changes and Exit.



MS-DOS BACKUP and UPDATE BIOS – AMI EFI BIOS

Backup existing BIOS

Boot up from MS-DOS without autoexec.bat and config.sys

Execute command: ZTEFUDOS.EXE [backup file name].ROM -o (English letter O)

```
C:\EFI\EFUDOS>ztefudos backup.rom -o
+-----+
|          AMI Firmware Update Utility(APTIO)          |
|      Copyright (C)2010 American Megatrends Inc      |
+-----+
Reading flash ..... done

C:\EFI\EFUDOS>_
```

Update BIOS

Boot up from MS-DOS without autoexec.bat and config.sys

Place the BIOS ROM file in the same folder of the ZTEFUDOS.EXE utility.

Execute command: ZTEFUDOS.EXE [update BIOS .ROM / .BIN file]

```
C:\EFI\EFUDOS>ztefudos I1227N2T.ROM
+-----+
|          AMI Firmware Update Utility(APTIO)  v2.35.201  |
|      Copyright (C)2010 American Megatrends Inc. All Right  |
+-----+
Reading file ..... done
FFS checksums ..... ok
Erasing flash ..... done
Writing flash ..... done
Verifying flash ..... done
Erasing NVRAM ..... done
Writing NVRAM ..... done
Verifying NVRAM ..... done
Erasing BootBlock ..... done
Writing BootBlock ..... done
Verifying BootBlock ... done

C:\EFI\EFUDOS>_
```

Then, make sure the update is success completed.

Turn OFF the PC.

After update complete, restore BIOS default settings by following the instructions from Page 6.

~end~