

---

# NM10 SERIES

## Addendum (291-9A125-0000F)

Thank you for choosing our NM10 series motherboard.

The product is specially designed to support HDMI/VGA dual display on Intel® ATOM™ + NM10 platform, please read the following information and configure the system accordingly to enjoy the unique feature.

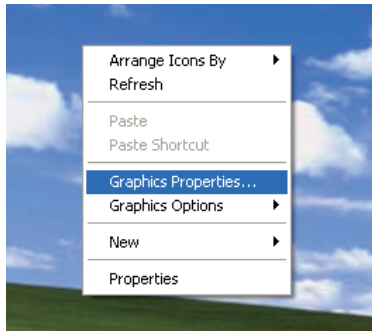
### The adjustment of graphics properties

**Note: 1. Before adjusting the graphics properties, make sure that the graphics driver has been installed completely.**

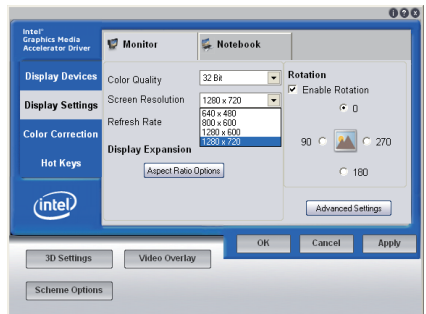
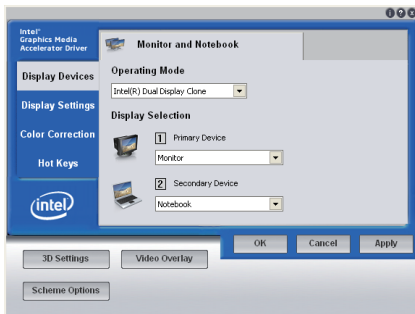
**2. The screenshots shown in this section are for the Windows® XP operating system.**

Users please note that the graphics properties can be adjusted as the following instructions.

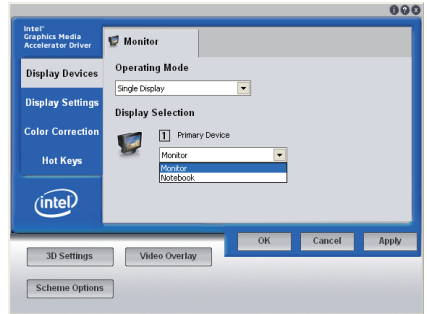
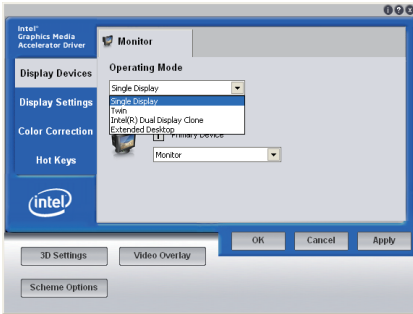
1. Right-click the mouse on the desktop, and choose **Graphics Properties** item.



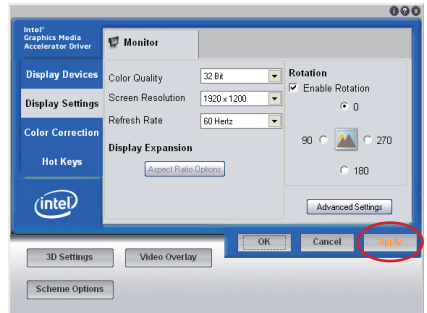
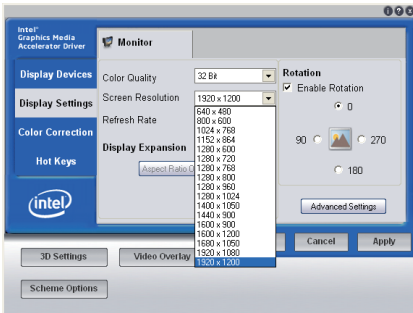
An interface will display as the image below. Click **Display Settings** tab, you can see the default **Screen Resolution**.



2. In **Display Devices** tab, set **Operating Mode** to **Single Display**, and set **Primary Device** to **Monitor**.



3. Click **Display Settings** tab, choose the **Screen Resolution** you want, and click **Apply**.



4. The dialogue box will appear as the image below. If you confirm the desktop change, please click **OK**. If you want to keep the settings, please click **Cancel**.

